



18th International Geography Olympiad

Paris, France

12–18 July 2022

Fieldwork Exercise Part II

Tasks and Resources

90 minutes – educated in English

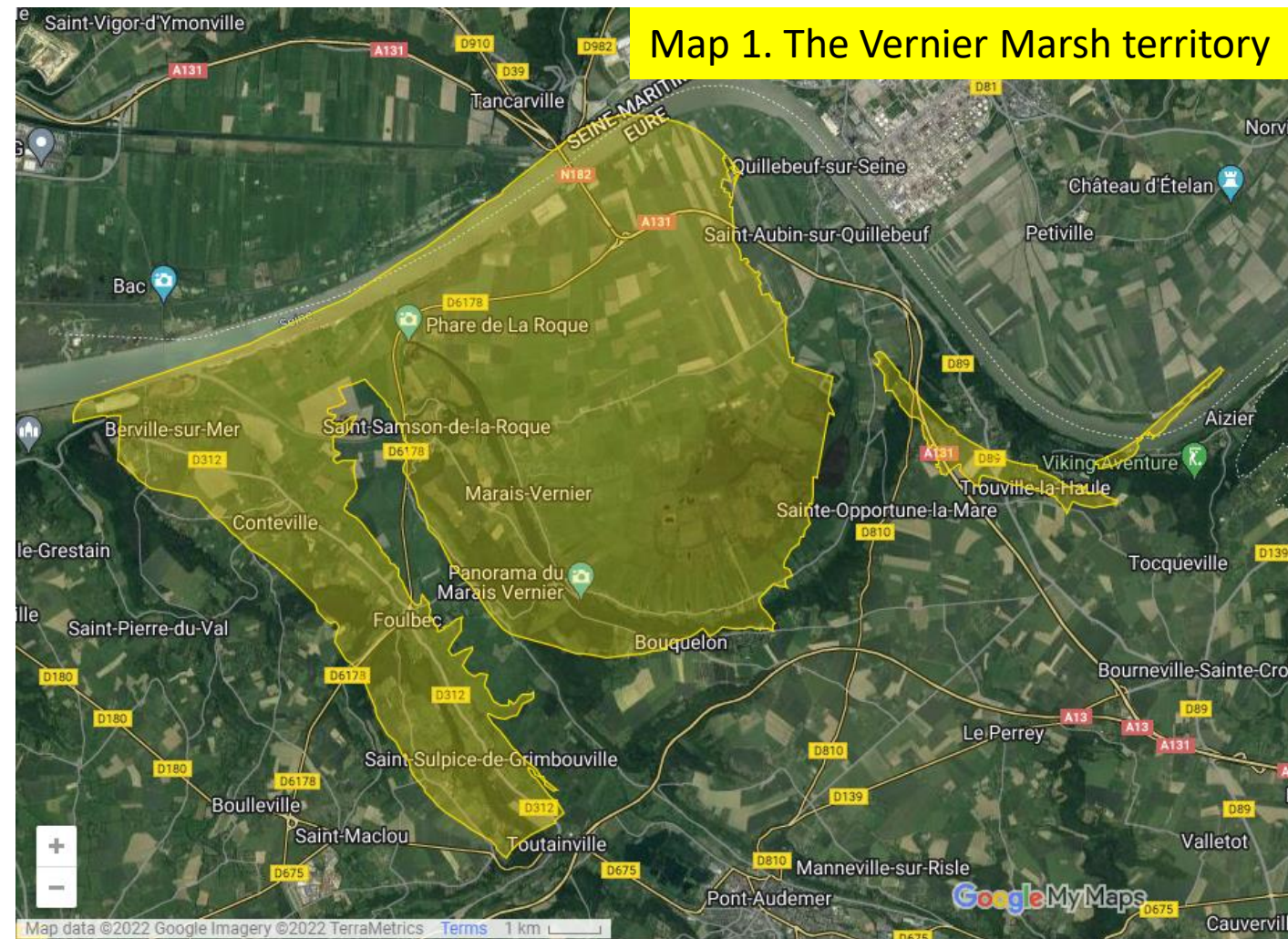
120 minutes – non-English educated

25 marks in total

The Vernier Marsh – introduction

Lying at the heart of the Norman Seine River Meanders Regional Nature Park, on the left bank of the Seine Estuary between Sainte-Opportune-la-Mare and Tancarville Bridge, the Vernier Marsh is a huge peat bog - the biggest in France - and a listed European area of ecological interest NATURA 2000.

Occupying an old meander of the Seine, this peaceful and unspoilt area, made up of reed beds, peat bogs and humid prairies and home to beautiful Highland Cattle, is rich in important fauna and flora. Along the paths and quiet little roads, you can discover all its natural treasures and traditional built heritage, made up of thatched cottages full of traditional charm.

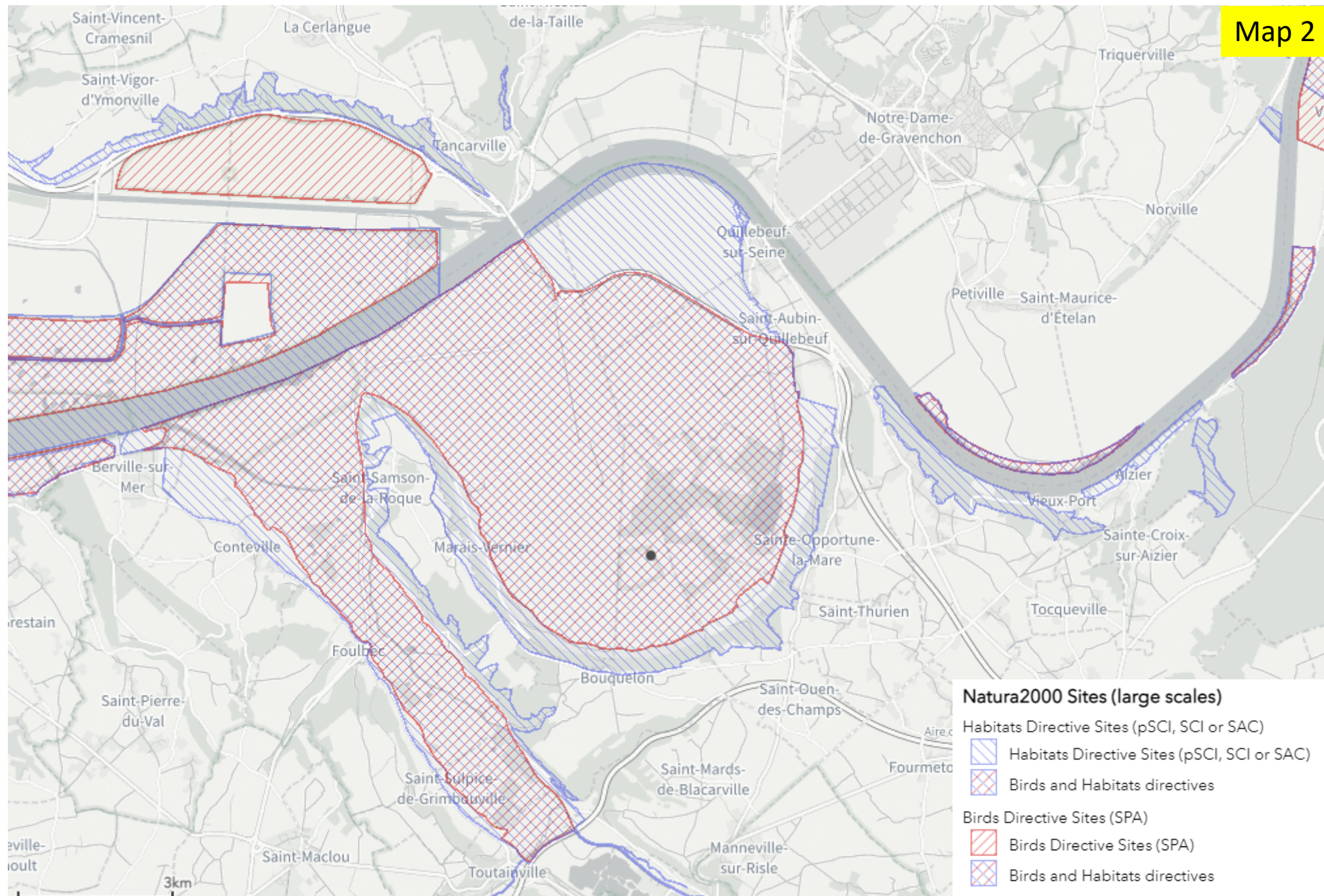




Task 2.1

Using map 1 and map 2, measure the total area of the Vernier Marsh in sq. km.

2 marks



Task 2.2 Sketch the land use shown in figure 1 in the surroundings of the Tancarville Bridge. Name each type of defined land use.

4 marks

Figure 1



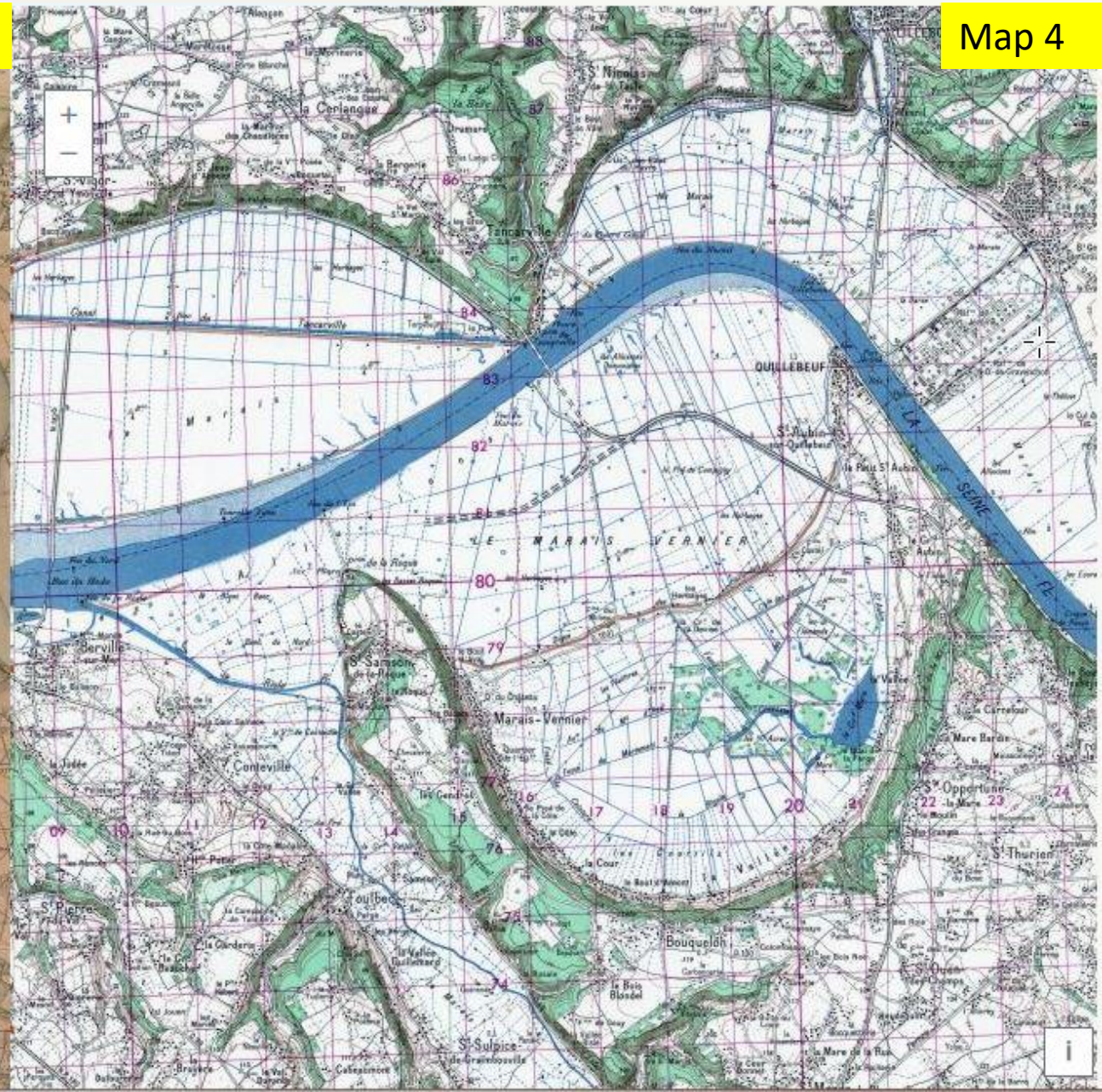
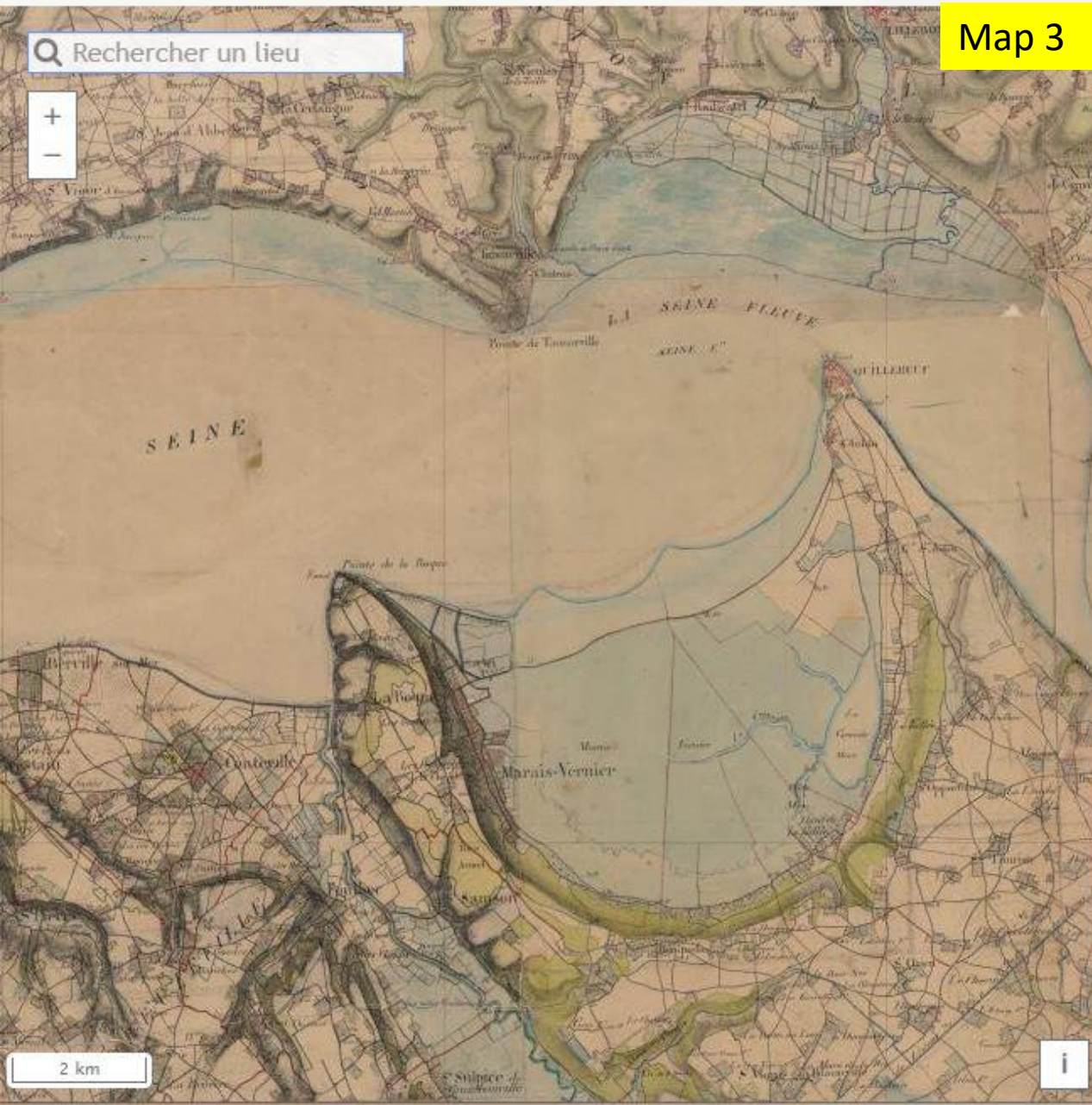
Task 2.3 By comparing map 3 with map 4, note 7 developments that have changed the functions and use of the original Vernier Marsh site. Indicate your answers in the table in the response sheet.

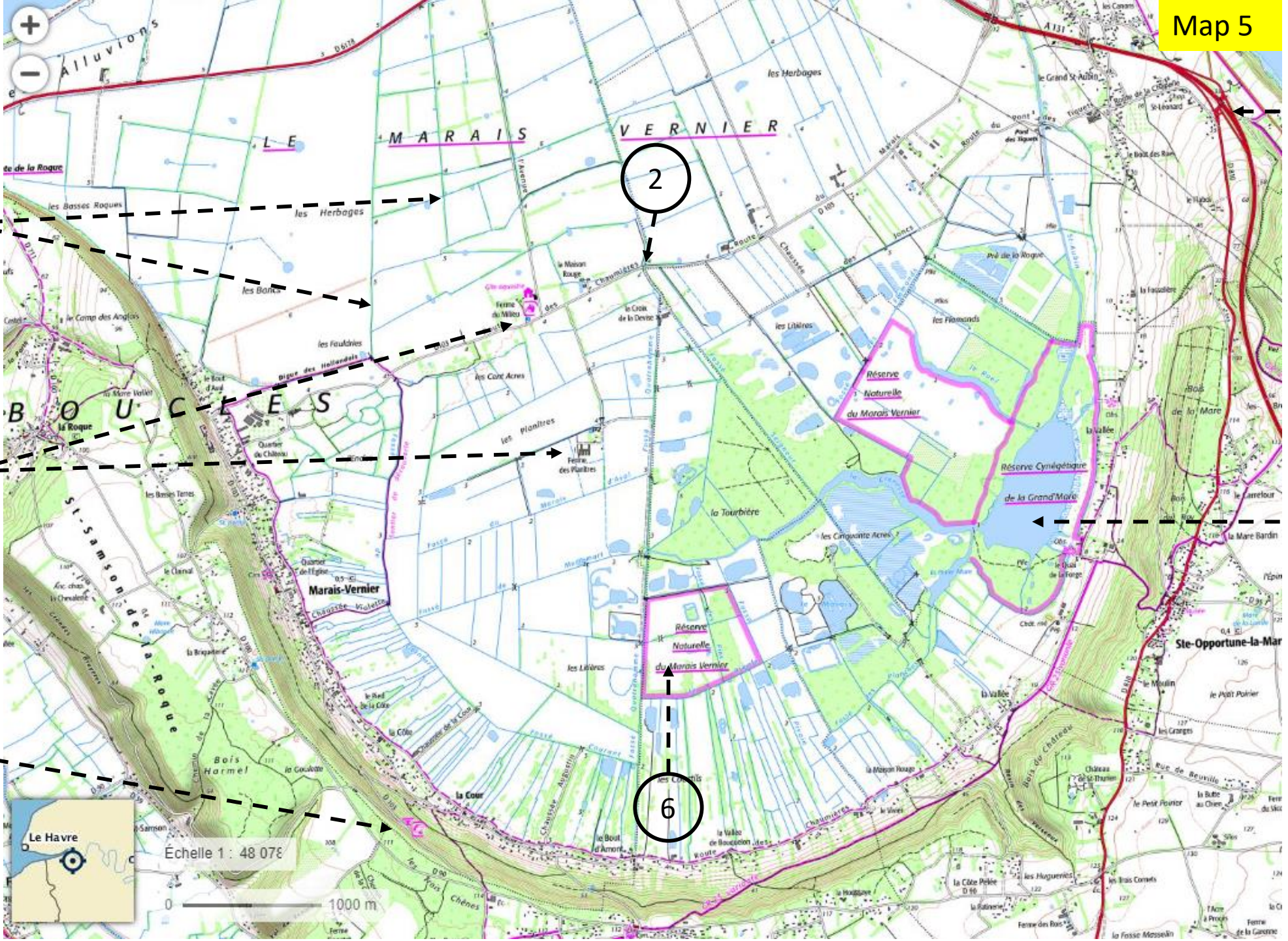
3 marks

Maps are on the next 2 slides.

Comparer Carte de l'état-major (1820-1866) ▼ avec

SCAN50 Historique de 1950 ▼





3

2

1

4

7

5

6



Echelle 1 : 48 078

0 1000 m

Task 2.4 Find and label on the copy of map 6 four places corresponding to aerial images 1, 2, 3 and 4.

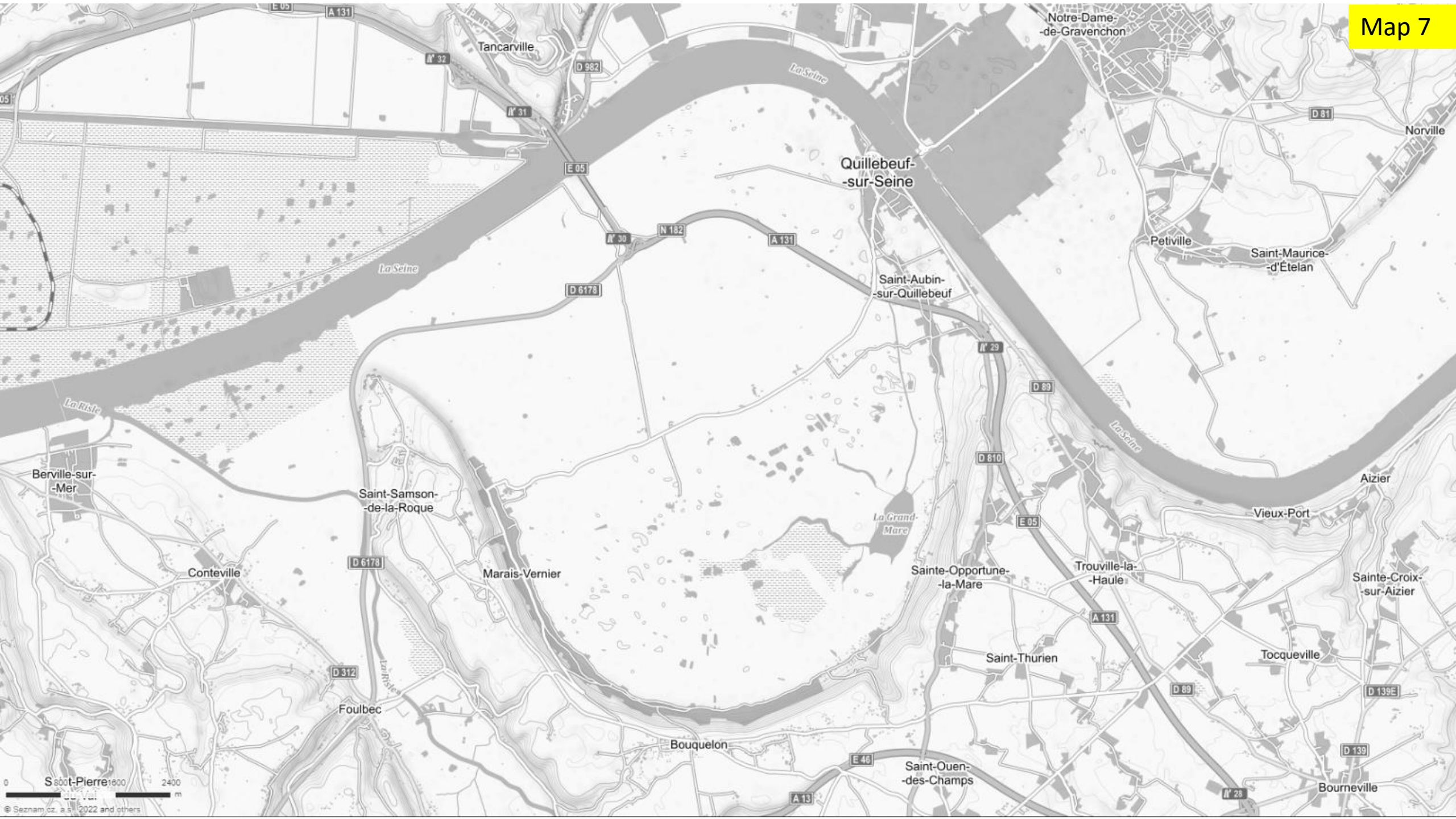
2 marks



Task 2.5 Design and draw onto the map of the marsh (map 7) a proposal for a sustainable tourism development project. Include different types of tourist facilities. Don't forget to add all map features. Justify your proposal in 8 short statements.

10 marks

The map is on the next slide and in the response sheet.



Task 2.6 Consider positive and negative impacts of the possible tourism development in the marsh for the inhabitants of the region. Also consider the risks and opportunities of the tourism development for nature.

4 marks

IMPACT ON THE INHABITANTS	IMPACT ON NATURE
Positive	Opportunities
1.	1.
2.	2.
Negative	Risks
1.	1.
2.	2.

End of Fieldwork Exercise Part II

Authors of FWE Part II: Alexis Alamel, Hana Svobodová, Sue Lomas, Honore Dupont.

- Sources of information:

- Text in the introduction: <https://www.france-voyage.com/tourism/vernier-marsh-1786.htm>
- Map 1: Google, ©2022, <https://www.google.com/maps/>
- Map 2: <https://natura2000.eea.europa.eu/>
- NATURA 2000 logo: https://commons.wikimedia.org/wiki/File:Logotype_Natura_2000.png, Michel.Deprun, CC BY-SA 4.0 <<https://creativecommons.org/licenses/by-sa/4.0/>>, via Wikimedia Commons
- Figure 1: Tancarville Bridge. Author: Kevin Leconte. Creative Commons CC0. <https://pxhere.com/en/photo/1596272>
- Map 3, 4, 5, 6: <https://www.geoportail.gouv.fr/carte>
- Map 7: Mapy.cz, ©Seznam.cz, a. s., 2022 a ©OpenStreetMap; adjusted by authors